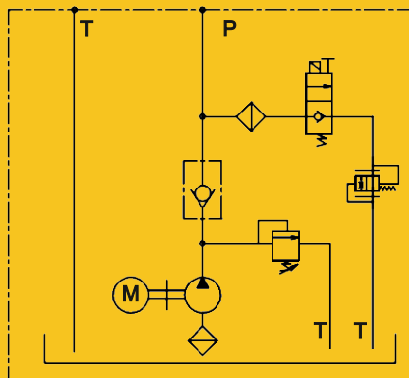


### THF3 Series Power Packs for lift

#### Circuit diagram



#### How to order

THF3	– D2 / 1.6		– G2.0	– SRH4			
Product type	Electric motor		Gear pump	Oil tank			
Appilication	Voltage	Power	Displacement	Material	Section	Mounting	Capacity
Power packs for lift	D1: DC12	1.6: 1.6KW	G1.6: 1.6cc/r	S: Steel	R: Round	H: Horizontal	4: 4L
	D2: DC24	2.0: 2.0KW	G2.0: 2.0cc/r			V: Vertical	5: 5L
		2.5: 2.5KW	G2.5: 2.5cc/r				6: 6L
			G4.0: 4.0cc/r				8: 8L

– P21	G24	M	– 4G
Relief valve	Solenoid valve		Oil port
System pressure	Voltage	Manual override	Thread type & size
P10: 10MPa P16: 16MPa P21: 21MPa	G12: DC12 G24: DC24	No code: Standard M: Manual override	4G: BSP 1/4" 6G: BSP 3/8" 4S: SAE 4 6S: SAE 6

#### Remark

Please contact us for special requirements such as different motor power & speed, pump displacement, tank material & capacity or oil port type.

#### Technical data

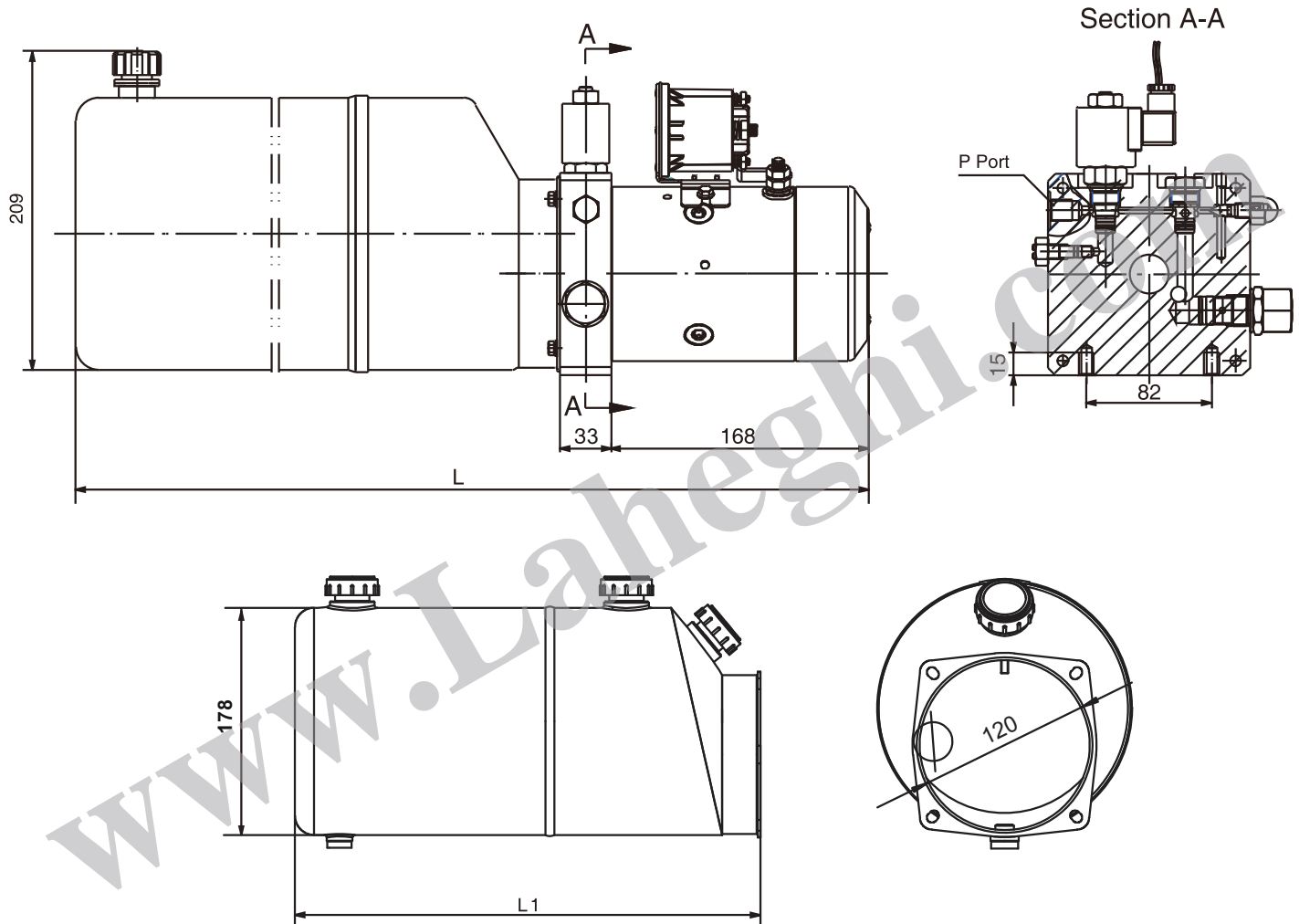
DC Motor	Speed (r/m)	2800
	Rotation	CW
	Duty	S3
	Ingress protection	IP54
Hydraulic fluid		Mineral oil
Seal material		NBR seals
Temperature range (°C)		-30 to +80
Viscosity range (mm <sup>2</sup> /s)		2.8 to 500
Oil cleanliness class according to ISO4406		Class 20/18/15

#### Notes

1. The power unit can't work continuously due to S3 duty e.g. 1 min on , 2 min off .
2. Clean all hydraulic parts before mounting the power pack.
3. First oil changing is after initial 100 hours running time. After that, do oil changing every 3000 hours.

### THF3 series power pack dimensions

Unit: mm



Tank capacity	4L	5L	6L	8L	10L	12L
L1	225	265	290	385	465	545
L	427	467	500	587	667	747